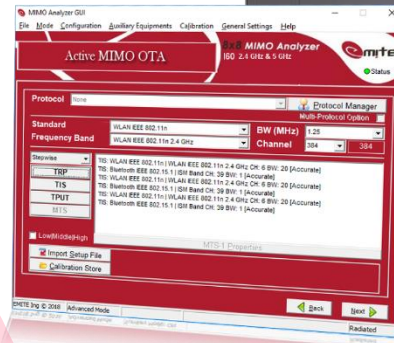


I60 Small-size Reverberation Chamber

Bluetooth and WLAN testing

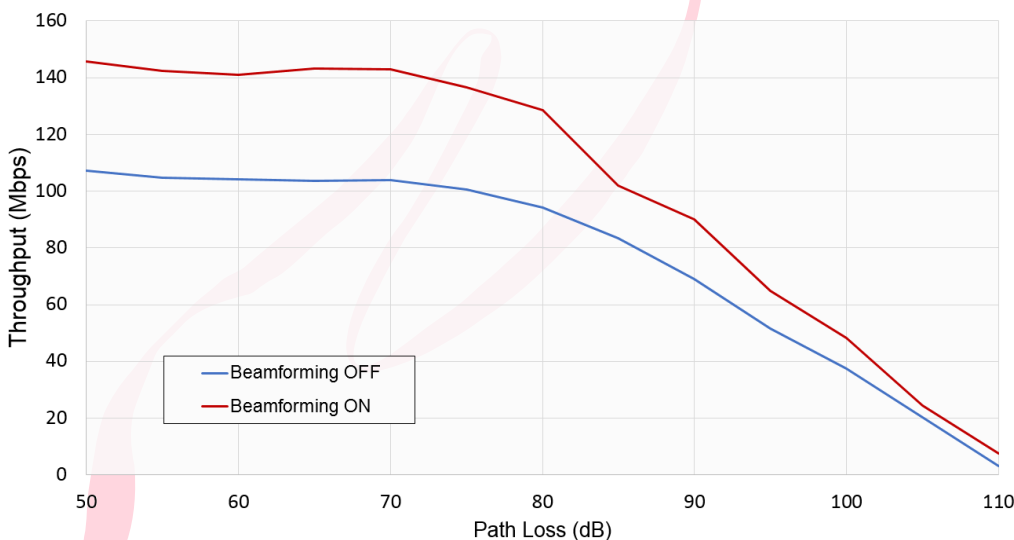
2.4 and 5 GHz frequency bands

- 1660 mm (H) x 815 mm (W) x 110 mm (L)
- Largest DUT dimension: 30 cm
- Maximum DUT weight: 5 kg
- Bluetooth (802.15) and WLAN (802.11abgnacax)
- MIMO Graphic User Interface for Windows
- Fully automated measurements with control of VNA, Wireless Connectivity Test Set and AP/STA
- Up to 8x8 MIMO testing
- Signalling/Non-Signalling OTA measurements
- Windows, Android, iOS, MacX, Linux, UWP and Tizen UE apps
- Hierarchical levels of automated testing
- Smallest footprint in the market, with wheels
- Mains power: 100-240 VAC 50-60 Hz
- Data interface: USB/TCP-IP
- RF isolation (shielding): > 80 dB



Measurement system

The I60 small-size Reverberation Chamber is a unique value-for-money Over-the-Air (OTA) test chambers. With smart-stirring, the I60 chamber has the smallest footprint in the market and is intended for OTA testing of Bluetooth 1.0/2.0, BLE 4.0/5.0 and WLAN 802.11abgnacax technologies for small devices up to 30cm, 5kg and 8x8 MIMO.



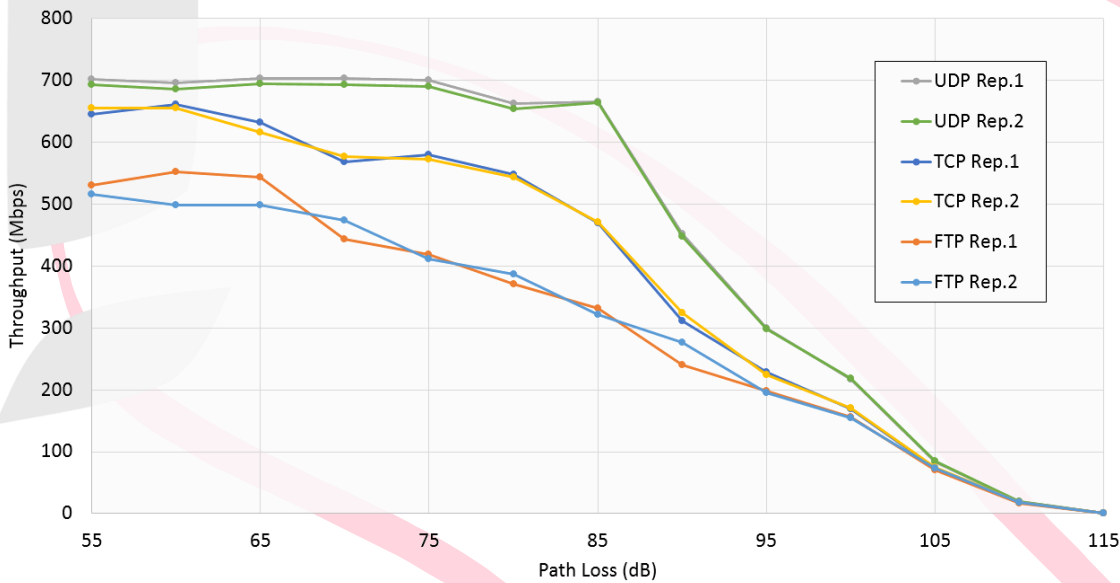
TCP Data Throughput measured with AP beamforming on and off at channel 44.

Explicit beamforming requires information to be sent from the client device to the access point in order to work.

160 Small-size Reverberation Chamber

Bluetooth and WLAN testing

2.4 and 5 GHz frequency bands



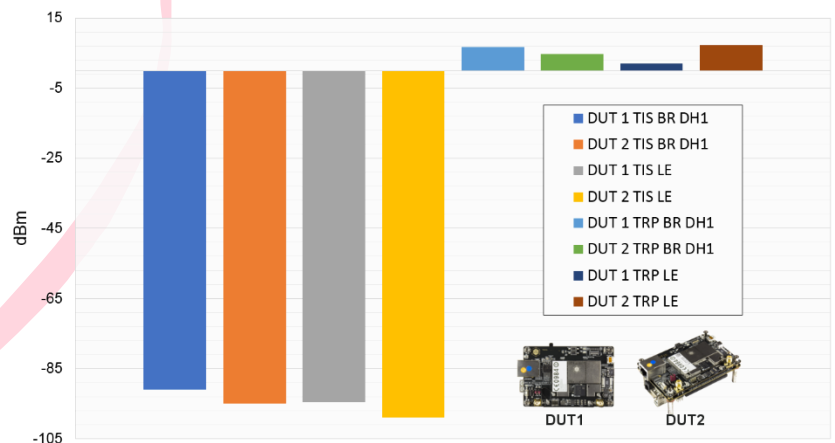
IEEE 802.11 ac 3x3 MIMO using an Access Point as DUT. TCP/UDP/FTP Data Throughput exhibiting very good repeatability.

The I-Series chambers provide for fast and accurate TRP, TIS, and Downlink and Uplink TCP/UDP/FTP 8x8 MIMO TPUT tests for UEs, wireless stations (STAs) and Access Points (APs), also with user-selectable technology, band, channel (including DFS ones), bandwidth, antennas, rates (MCS) and other parameters in an individual manner for each test on a batch, which can then be run overnight in an unsupervised manner.

Bluetooth TRP and TIS testing for different Burst types (@BR DH1 & LE 1M PHY at the figure) provide a very good insight on Bluetooth device performance on the field.

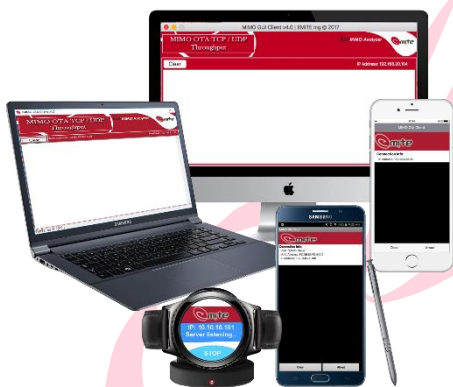
Key Features

- Pre-calibrated from manufacturing plant
- EMITE UE app for automated WLAN testing



EMITE is a 3GPP Member
EMITE is a CTIA Member

This data sheet was correct at the time of going to print. The right is reserved to change specifications at any time.
Data Sheet EMITE Ing 160 2019.1 ENG.
Wise Waves is a registered trademark of EMITE Ing. Spain
The products are patent protected



TIZEN

© Copyright EMITE Ing 2019

www.emite-ing.com

EMITE. Edif. CEDIT. Parque Tecnológico Fuente Álamo. Ctra. El Estrecho-Lobosillo km 2
E-30320 Fuente Álamo de Murcia. ESPAÑA / SPAIN

Tel. +34 968 100 181 | Fax +34 968 100 381 | sales@emite-ing.com