

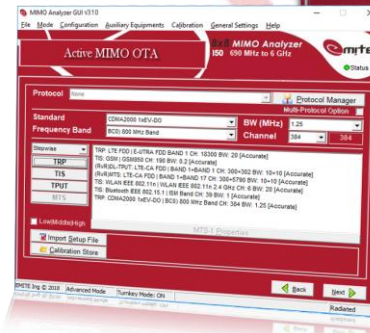
150 Small-size Reverberation Chamber

Internet of Things (IoT), Machine-Type-Communications (MTC), short-range communications and WLAN testing

690 MHz to 6 GHz

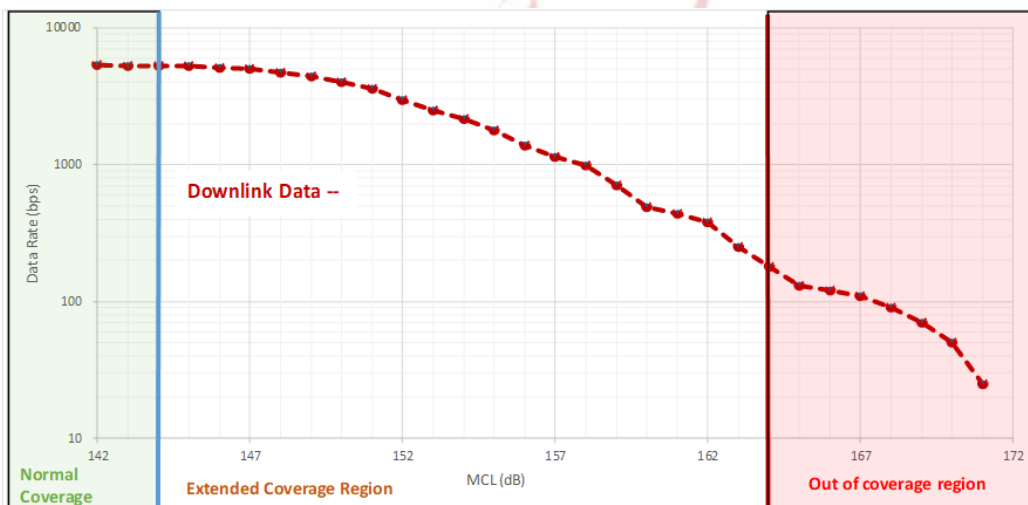
Main Features

- 1600 mm (H) x 600 mm (W) x 950 mm (L)
- Largest DUT dimension: 15 cm
- Maximum DUT weight: 5 kg
- W-IoT (LTE-M, NB-IoT, EC-GSM-IoT), MTC (LoRa, Sigfox)
- Short-Range (BT, BLE, ZigBee, Z-Wave), WLAN (802.11abgnac)
- MIMO Graphic User Interface for Windows
- Fully automated measurements with control of VNA, eNodeB and AP
- Up to 2x2 Antenna MIMO testing
- Signalling and Time-Domain OTA measurements
- Embedded touchscreen PC
- Windows, Android, iOS, MacX, Linux, UWP and Tizen UE apps
- Hierarchical levels of automated testing
- Smallest footprint in the market, with wheels
- Mains power: 100-240 VAC 50-60 Hz
- Data interface: USB/TCP-IP
- RF isolation (shielding): ~ 80 dB



Measurement system

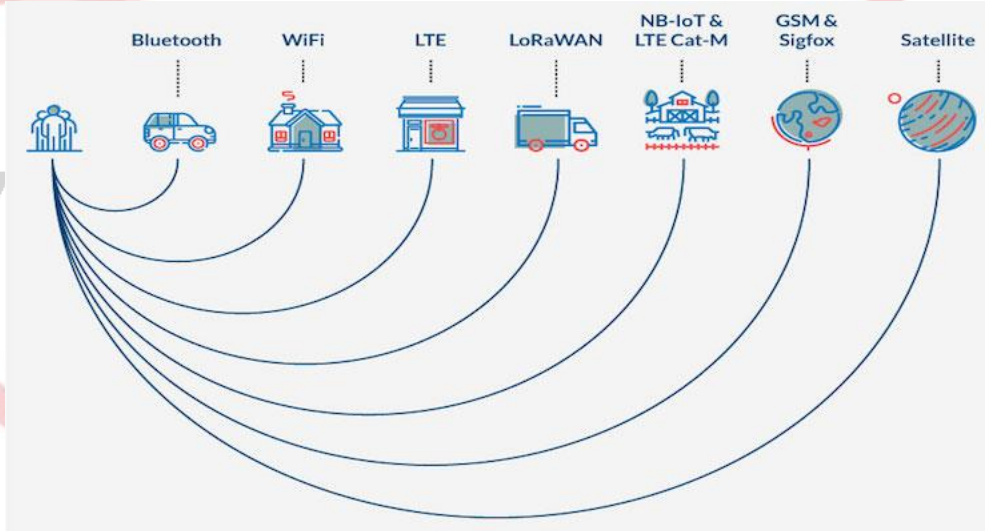
The 150 small-size Reverberation Chamber is an amber gem set of Over-the-Air (OTA) test chambers. With smart-stirring, the 150 chamber has the smallest footprint in the market and is intended for OTA testing of W-IoT (LTE-M, NB-IoT and EC-GSM-IoT), MTC (LoRa, Sigfox), short-range radio (BT 1.0/2.0, BLE 4.0/5.0, ZigBee, Z-Wave) and WLAN 802.11abgnac technologies for small devices up to 15cm and 5kg and 2x2 MIMO.



Maximum Coupling Loss (MCL) evaluated for a W-IoT NB-IoT device, showing the normal, extended and out of coverage regions.

I50 Small-size Reverberation Chamber

Internet of Things (IoT), Machine-Type-Communications (MTC), short-range communications and WLAN testing
690 MHz to 6 GHz

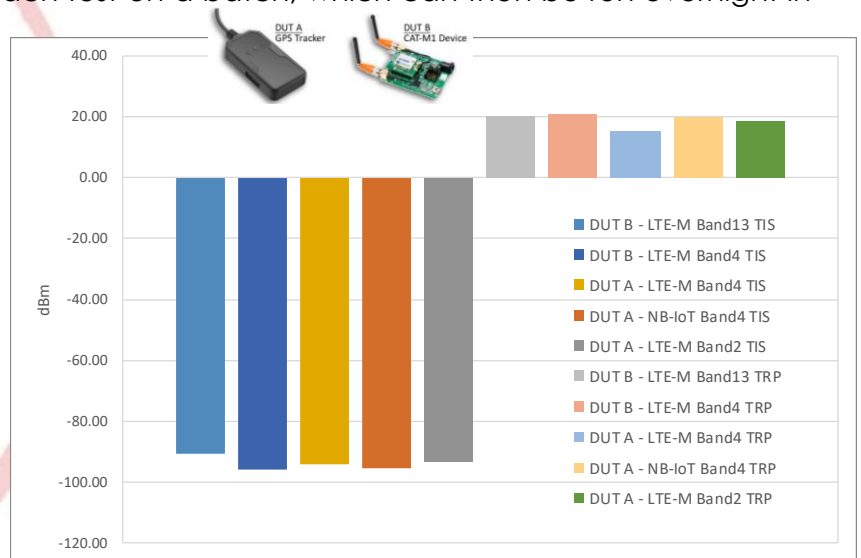


The I-Series chambers provide for fast and accurate TRP, TIS, TPUT, downlink and uplink Maximum Coupling Loss (MCL) and Downlink and Uplink TCP/UDP 2x2 MIMO TPUT tests for UEs, IoT modules, wearable devices, wireless stations (STAs) and Access Points (APs), also with user-selectable technology, band, channel (including DFS ones), bandwidth, antennas, rates (MCS) and other parameters in an individual manner for each test on a batch, which can then be run overnight in an unsupervised manner.

LTE-M and NB-IoT TRP and TIS testing for different data Rates (@123kbps at the figure) provide a very good insight on IoT device performance on the field.

Key Features

- Pre-calibrated from manufacturing plant
- EMITE UE app for automated WLAN testing



EMITE is a 3GPP Member
 EMITE is a CTIA Member
 EMITE is part of a Sigfox partner (authorization pending)
 EMITE R&D Lab at Universidad Politécnica de Cartagena is a LoRA Alliance member (authorization pending)

This data sheet was correct at the time of going to print.
 The right is reserved to change specifications at any time.
 Data Sheet EMITE Ing I50 2018.1 ENG.
 Wise Waves is a registered trademark of EMITE Ing. Spain
 The products are patent protected

© Copyright EMITE Ing 2018

www.emite-ing.com

EMITE. Edif. CEDIT. Parque Tecnológico Fuente Álamo. Ctra. El Estrecho-Lobosillo km 2
 E-30320 Fuente Álamo de Murcia. ESPAÑA / SPAIN

Tel. +34 968 100 181 | Fax +34 968 100 381 | sales@emite-ing.com